

Newsletter

Welcome to Term 2

Kia ora Salford Whānau,

It sounds like there have been some fabulous adventures and some peaceful, relaxing times throughout the holiday break from what the children have recounted to us. The tamariki have started the term focused and ready for learning, the classes have been busy and working hard.

Welcome back to Patty, it is lovely to have you back at Salford School. Patty is one of our wonderful kaiāwhina kaiako and a valuable team member. You will see her around the school working with individuals and groups of tamariki throughout the school.

Welcome to Toby and Dan who have joined us in the past weeks. We look forward to getting to know you and your families over your time at Salford School.

ANZAC DAY DAWN SERVICE April 25, 2024

We had a group of tamariki represent Salford School at the Dawn Service on ANZAC Day. Thank you to Elizabeth, Lewis, Chloe, Cohen, Ryleigh, Charlee, Skylah and Cooper E for representing Salford School at this important event.

It was also great to see Libby, Fraser, Charlotte and Cyraul there as well representing various groups and just acknowledging the importance of ANZAC Day. Thank you to the whānau members who supported the tamariki to attend.



Inside this issue

ANZAC Remembrance	1
Grip Leadership	2
Top Bike Competition	2
Reading with Rufus	3
All Creatures Great and Small	3
Salford Fast Ferns	4
Thank You	4
NZ Sign Language Week	5
Salford Cross Country	5
Whanau Hui	6
Forms of Communication	6
PTA—Pepper and Me	7
Room 7	8
Room 7	9
What is coming up	10



GRIP Leadership 2024

Before the holiday break our House Captains attended their student leadership day at the GRIP Leadership Conference in Gore. They learned about the sacrifices leaders make and that leading is about others, not just about themselves. They are looking forward to following up on this day with resources we have connecting to the GRIP Themes.

Thank you to Sara W for transporting some of the tamariki to Gore and our appreciation to James Hargest for transporting some of the tamariki back to school again afterwards.

'E tu kahikatea, hei wakapae uroroa. Awhi mai, awhi atu, tatou, tatou e'

Kahikatea stand together; their roots intertwine, strengthening each other.

We will help one another and together we will be strong

Skool Loop

Sports notices will be shared through School Loop. Enrolments for sports can be completed directly on this app.

You can also communicate

- your child's absence,
- make after school care arrangements

Using the Forms ICON on Skool Loop as well.



Top Bike Competition

We had a group of tamariki take part in the Top Bike Event in Queen's Park as well.

Thank you to Samantha Cunningham for managing the group at the event and well done to Libby H, Cyraul W, Thea R, Ollie C, Bede S and Dale F for their awesome work at this event.

This was the first time this event had been held by Cycling Southland it was very much enjoyed by all.





Reading with Rufus

We are extremely fortunate to have Rufus spend time with us at Salford School through the generosity of his family. The tamariki at Salford School enjoy reading to Rufus and he is a very avid listener

Disco Term 1 "All Creatures Great and Small"

What a fabulous evening of dancing and singing! Well done to everyone for their stunning costumes and awesome dance moves. So much fun!!!

The House Captains enjoyed taking all of the donations to the SPCA.

The SPCA were very appreciative of all of the goodies for the animals they look after and said it would go a long way to help them. We have since received a certificate and other bots and pieces from the SPCA as a thank you and acknowledgement of the donation. The certificate is on display in the office.

Thank you everyone for your support of the disco and the House Captains chosen charity.



Chatbus

Chatbus:

Miles is here on Mondays this year to support the tamariki.

Chatbus operates with tamariki being able to make self referrals at school and whānau (and kaiako) are also able to refer.

Forms for whānau to refer are available from the office, the school website or the classroom teacher.

Alternatively you can email

miles.chatbus@gmail.com

and he will respond from there.



Seesaw

The classes use this to share day to day learning activities and happenings with you. Seesaw has been invaluable over the last two years through lockdowns and distance learning times. Should we need online and distance learning again this app will be used for this as well as.

Teachers have appreciated being able to share what is happening in class with you easily on this app and the children are becoming more proficient at creating posts to share their own learning with you as well.

The children are very proud of being able to do this and enjoy your feedback on their posts. With parents and whanau not able to be on the school grounds, Seesaw has definitely helped everyone stay connected and see what is happening regularly in the classroom.



Salford Fast Ferns Netballers get an early start.

Thank you to Michelle Findlater who ran a netball session at the stadium. We have more netball teams this year than we have had in a while which is fantastic.

Salford has 4 teams in the Term 2 competition—3 Year 5/6 Teams and 1 Year 3/4

Team. Always great to see a sport growing.

Michelle ran a session at the stadium for those who were able to attend. Kia ora Michelle and thank you also to the whānau who supported with this.



Onsite work during the Term break.

Once again we had people working on the school during the holidays.

A huge thank you to **Cabel Wilton** who donated his time and materials to dig out the old netball poles and set the new ones in place.

We now have double headed netball hoops with a Kiwi Netball height and a regulation height for the tamariki to use. We can also remove these from their setting for events at the kura where we may need the full court space.

Thank you Cabel, the tamariki have been enjoying using these during the week.

The back entrance of the school leading to the Talbot Street Reserve flood banks is looking much better and more secure with **Jay Coote** and his team from the Council, having worked on this during the break as well.

This area is cordoned off at the moment to allow the grass to grow and the soil to settle but it will be a lovely grass slope once it is grown. Much tidier, cleaner and easier to look after than the deteriorating space it was before the holidays.

Thank you to Jay and his team for this mahi.

New Zealand Sign Language Week

"Hands up if you are ready to sign with us!"

This week is New Zealand Sign Language Week.

Each morning there will be a challenge posted for the ākonga to work out during the morning. Paula R (another of our fabulous kaiāwhina kaiako) will be drawing winners from the entries each day.

It is lovely seeing the growth in sign language throughout the school. A number of children have identified that they know 3 languages—English, Māori and New Zealand Sign Language.

Many of our students also have an additional language that they know from the country they moved from to settle in New Zealand (some children even have two languages from their previous home country).



"A writer, I think, is someone who pays attention to the world." Susan Sontag

Salford Cross Country is scheduled for Wednesday 8



Arohanui

*Sarah Gibbs
Tumuaki Salford School*

Cross Country is Wednesday 8th May with races beginning at **1:50pm**.

The children have been training for this event and setting themselves goals.

Have a chat with your child at home and see what it is that they are wanting to achieve at this year's cross country. We look forward to celebrating these goals being achieved with the tamariki after the event.

We will have a coffee car at the event to help keep you warm and hydrated during the afternoon.

Children can wear their **House Colours** for the day. Clothing and footwear needs to be appropriate for long distance running.

- **Hauoko - Red**
- **Wakatipu - Green**
- **Manapouri - Yellow,**
- **Te Anau - Blue**

If the weather is not suitable on Wednesday, we will postpone to Thursday.

Please keep an eye on **HERO** for information.



Week 2 Glossary

Week 2 Glossary:

Whānau-
family, wider family

Kia ora-
hello, welcome, thank you

Kaiako-
Teacher

Kaiāwhina kaiako-
Teacher aide

Ākonga-
Student(s)

Tamariki-
Children

Mahi -
Work / learning

Hui-
meeting / gathering / assembly



Facebook -

This is our sunshine, rainbows and lollipops page!



We will be sharing lots of great things that happen at the school, events and opportunities as well as photos of just the 'everyday' things as well.

Whānau Hui

We had our first whānau hui for 2024 during the week. Thank you to the whānau who attended and to those who sent in their thoughts and feedback. We had a lot of great discussion and ideas shared to develop and improve what we are doing at Salford School for our Māori

Akonga and their whānau and to ensure we are giving effect to Te Tiriti o Waitangi.

Our **next Whānau hui** will be **Wednesday 31st July at 7:00pm** in the staffroom.

More specific information regarding this will be shared closer to the time.

Forms of Communication

The kaiako are currently reviewing communication at Salford School (their internal communication as well as external communication).

We have had a couple of comments regarding the number of notifications on Hero. We are fortunate with HERO to be able to send messages to just certain groups so that not everyone receives everything.

If you have a child who is busy in the school you will no doubt receive quite a few notifications.

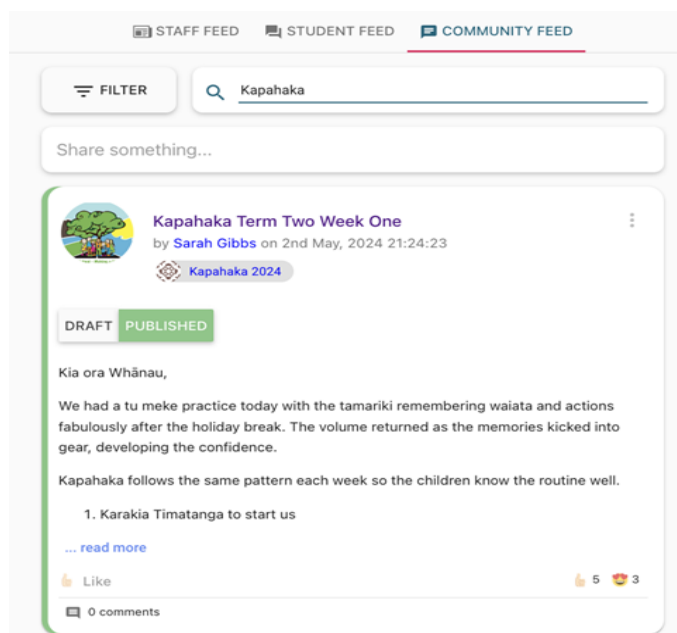
If you are missing information or feel that you have missed something you can search through the notifications easily by following the steps below.

Your screen will look slightly different to this however simply by searching for the topic you are looking for i.e. Jump Jam, Kapahaka, Room ____, etc

- use the (magnifying glass).

You will have pull up all the posts with the heading that have been shared with you filtered ready to view.

If you are looking for something and your child is not a member eg Kapahaka, you will not be able to see the posts.



FROM the PTA—*Pepper & Me*

The PTA have a fundraising event coming up next week.
Pepper & Me.

Between the **13th and 29th May** you can purchase delicious Pepper & Me products using our special code.

You will receive a 5% discount off your purchase, and 15% of all sales will be donated back to the Salford School PTA.

To purchase, follow the link pepperandme.co.nz/FUNDSALFORDPTA or enter the code FUNDSALFORDPTA at the checkout.

There is a recipe book filled with delicious recipes for the Pepper & Me products which will be shared along with all of the information for the fundraiser on Hero next **Sunday 12th May**.



The poster features a background image of various food dishes. At the top center is the Pepper & Me logo. The main text reads: 'Fundraising Program' in a large, white, cursive font. Below this, it says 'USE THE DISCOUNT CODE' in small caps, followed by 'FUNDSALFORDPTA' in large, bold, white, sans-serif font. Underneath, it states 'for 5% discount on all Pepper & Me products*' and 'AND 15%' in large, bold, white, sans-serif font. The final line says 'of all sales using the discount code will be donated to support Salford School PTA' with a small leaf icon below. At the bottom, it says 'At checkout please use the code above. Valid from 13/05/24 to 29/05/24.' and a small asterisk note: '* Excludes Addicts Monthly Bundles.'



Home for Pepper & Me addicts: A collection of recipes using your favourite products.
The sweet as foodie's loyalty club showcasing an amazing range of recipes curated to showcase your favourite Pepper & Me products.

myKindo

This is the PTA App being used. Order school lunches, make payments, purchase items for discos and PTA Fundraising events, ... it's all here to see and pay, any time, anywhere.

Your PTA Administrator can set up whatever needs paying or completing through Kindo.

This myKindo app will display it for you to take action.

You can contact the PTA at anytime on PTA@salford.school.nz



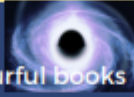
Amazing
ROOM 7





Million POETRY

A MILLION IS...



A million is all the bright, colourful books
in the library.

The brown caramel spots on a tall giraffe
in the zoo.

The white fluffy feathers on a seagull
gliding through the soft wind.

The sphere shaped planets floating in the
inky black sky of space.

The galaxies holding planets and the
bright stars.

The black holes sucking up spaceship
scraps and asteroids.

The ghosts roaming and haunting the
world.

A million is all the beautiful white holes in
the different galaxies.

By Alexis

A Million Is



A million is the bright green grass blades in the
ground
The dewy leaves dancing on the trees.
The shining blue waves crashing at the beach.
The rain drops falling down from the dark sky.
A million buzzing bees landing on the flower
each day.

By Isla

What is a Million

A million is the leaves on a tree.
The rain drops on my head.
A Million is the amount of times
I win Roblox.



From Dom

What is a Million?

A million is the neon green leaves dancing in the wind.

The uncountable amount of beautiful flower petals
scattered all around the world.

The creepy spiders that crawl on you when you are sleeping.

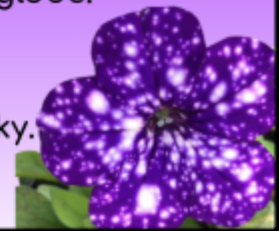
The raindrops that fall from the sky on a gloomy day.

The infinite amount of people walking all around the globe.

The fluffy white clouds floating happily in the breeze.

A million is the peaceful birds that zoom across the sky.

By Lihnè



Suzuki Music Education for Young Children

My name is Ingrid Lindsay-McCarthy and I am a registered Suzuki Violin (viola) teacher with over 25 years teaching experience.

It is family friendly and includes parental participation. Beginner lessons typically are a 15 min individual lesson and then a half hour group lesson. I base my teaching on making things fun and meaningful for the child and use games as a technique to develop cognitive, physical, social, aural and kinesthetic abilities.

I have a small number of little violins for hire. I also teach older children and adults and am a member of Invercargill Symphony and fiddling is also something I teach.

I currently have space in my studio and am happy to answer any questions.

Fees: \$15 for 15 min lesson and group class.

<https://suzuki.org.nz>

<https://suzuki.org.nz/home/suzuki-method/>

How playing an instrument benefits your brain - Anita Collins
<https://www.youtube.com/watch?v=R0JKCYZ8hng>

What is coming up:

Use the Calender icon on SKOOL LOOP and keep up to date with all events at Salford School. *This is linked directed to the School online calendar.*

STUDENT LUNCHES

Daily—Heat ups—please ensure your child's lunch is in a container or wrapped suitable for a warmer. Lunch must be clearly named and include the class room number.

Tuesday—Sushi—Flying Wasabi—(Ordering method: Parents can order by texting Kana on 021784501 or messaging the facebook page (Flying Wasabi) by Monday 2pm with their child's name / room number / which sushi pack / School their child attends. Payment is made by bank transfer by Monday. **before 2.00pm on Monday.**

Wednesday—Subway Orders - **please order ONLINE via the website — Order BEFORE 9:00AM AT www.subwayexpress.co.nz/**

Friday—Sausage sizzle - orders **MUST** be completed using the [myKindo app](#) or you may email the PTA on pta@salford.school.nz. All orders must be completed by noon on Wednesdays. You can download the myKindo App from the Apple Store or Google Play. No payment or orders via the Office please.

Calendar:

Term Two Events:

- 8 May—Salford Cross Country
- 9 May—Salford Cross Country —postponement day
- 13—29th May—PTA Pepper and Me Fundraiser
- 14 May—Storylines Author Visit—Years 3—6 only
- 16 May—Phoenix Zone Cross Country—Bluff
- 23 May—Phoenix Zone Cross Country—Postponement date
- 24 May—Full School Hui—starting at 2:15pm
- 26 May—31 May—Salford Scholastics Book Fair
- 31 May—Book Character dress up day
- 4 June—Teacher Only Day—NO Students
- 7 June—Clubs start
- 12 June—Sing Thing—ILT Stadium
- 14 June—Southland Primary Schools Cross Country Champs
- 31 July—Whanau Hui 2—7.00pm Staff Room
-