



TE KURA O MIMITANGIATUA

**Where the Country,
Coast and Classroom meet we **Think,**
Ask, Do, Discover Together.**

30th May 2024

Mimi School Values

This year we will continue to unpack and develop our understanding further in relation to our school values, while explicitly teaching these daily. The hope is for our tamariki to apply these in everything that they do around our kura, at home and our community.

Our school values **Ngākau Mahaki - Respect**, **Kia Maia - Courage**, **Mana Motuhake - Independence** and **Kia Manawanui - Perseverance** are the four cornerstones to the Mimi School curriculum. As a school whānau we believe that instilling our children with these cornerstones will provide them strong foundations to live by.

To acknowledge our tamariki who are uplifting these qualities during break times kaimahi (staff) will continue to give out 'Ka mau te wehi' cards where a weekly draw will take place at assemblies. Students drawn will receive a juicy or a prize from the prize box. A major draw takes place in weeks 3, 6 & 10 of each term. All 'Ka mau te wehi' cards are put into a box and two names are drawn. Students will either win lunch on Matua to the value of \$10 or a sports ball.

Our focus for the term:

Week 1 - 3: Mana Motuhake - Independence

Week 4 - 6: Ngākau Māhaki - Kindness: Being Bucket Fillers

Week 7 - 8: Kia Manawanui - Perseverance

Week 9 - 10: Class to decide based on needs

Literacy Afternoon - Postponed

Due to a very busy week next week we will be postponing this literacy afternoon to Tuesday 25th June 2024.

We would love for you all to attend! The purpose of this afternoon is for our kaiako to share information, and korero about the **Better Start Literacy Programme (Structured Literacy)** in the junior and middle classes. The second part of the hui is all staff sharing tips, resources, ideas and/or activities that can be used at home to support reading. These are designed to be fun/easy and aren't stressful. As a kura, we are aware that home learning can be challenging at times.

We would like as many whānau to attend this afternoon.

When: Tuesday 25th June 2024

Time: 4pm - 4.45pm

Vision and Hearing Testing

Vision and hearing screening is completed by Te Whatu Ora Health New Zealand Vision and Hearing Technicians at our school. The technician will be visiting our school on **Tuesday 4 June 2024** to test eligible children for vision and/or hearing.

Eligible children include:

New Entrant

Routine screening is completed for children who are new to school, and/or have not completed their B4 School Check and/or require further testing post B4 School Check.

If you have any queries or concerns, or do not wish for your child to have this screening done, please contact the school office.

23 Pukearuhe Road, RD 44, Urenui, 4377

Phone 752 3617, mobile 027 752 3617

Email admin@mimi.school.nz

www.mimi.school.nz

Student of the Week

Last week the 'Student of the Week Awards' went to:

Kowhai:

Nikau Mattock For trying really hard with all your work and making great progress with your sounds and reading.



Matai:

Frankie Corbett For Mana Motuhake, independently writing a great letter to our new class mate - you are amazing.

Rimu:

Logan Brendon For showing Mana Motuhake- Independence in your reading by staying focused and trying your hardest at answering questions about the text. Kā mutu pea!



CONFERENCES and TEACHER ONLY DAY

Just a heads up regarding early school closure or full closure for **conferences** and a planned **MOE Teacher Only Day** for this term.

Conferences are planned for next week, - Week 6.

- *Wednesday 5th June (Kowhai) ONLY - 3.30pm - 5pm*
- **School operates as normal**
- *Thursday 6th June (Whole School) - 3pm - 7pm*
- **Closed for instruction from 2pm - Supervision available**
- *Friday 7th June (Matai & Rimu ONLY) - 9am - 3pm*
- **School closed for instruction - No supervision available**

As part of the curriculum redevelopment, the **Ministry of Education** has also allocated **two Teacher Only Days**, with our first one in week 9 of this term on **Monday 24th June**. **School will be closed for instruction**. Our kaiako will spend the day working with our Professional Development Officer, Donna Davies to continue unpacking the new **Draft Literacy and Numeracy curriculum**, which we will need to ensure is implemented from the beginning of 2025.

Absences

If your child is absent from school, please make sure you let the school office know **before 9am**, or notify us through the HERO app.

Mimi School House

The Mimi School house is available to rent from July.

This is a great opportunity for a family to register their interest. The is a spacious 3 bedroom home, with a modern kitchen and lounge/dinning area which leads onto a sunny deck. The house also includes a large washhouse, bathroom with bath and shower combined.

The property is fully fenced. A Mimi School information pack available on request.

To register your interest Please email: botgardner@mimi.school.nz Or Call: 027 248 4029

PLEASE NOTE:

Front Gate Area - School Bus

Whānau, we ask that from **3.20pm - 3.40pm each school day** that you park or do pick up from the wood shed up or the lamp post down towards the soccer field. This allows the bus to safely drop off our tamariki in the afternoon.

The pahi (bus) is rather large and when you park close to the front gate it is a struggle to pull in to ensure our tamariki enter and exit the bus safely.

This Friday:



Funding Grant Acknowledgements

On behalf of Mimi School I would like to acknowledge Toi Foundation, Pelorus, Aotearoa Gaming Trust, Lottery Grants Board, Pub Charity and NZCT for their generosity and continued support with grants.



School Lunch orders:

Fridays are lunch order days.

Please place your orders at the school office before 9am.

Thank you to those parents who have offered to help with pick up of these:

31st May - Anne-Maree

07th June - NO lunches (Conferences)

FRIDAY LUNCH

Place your orders at school office before 9am

New Price List 2024

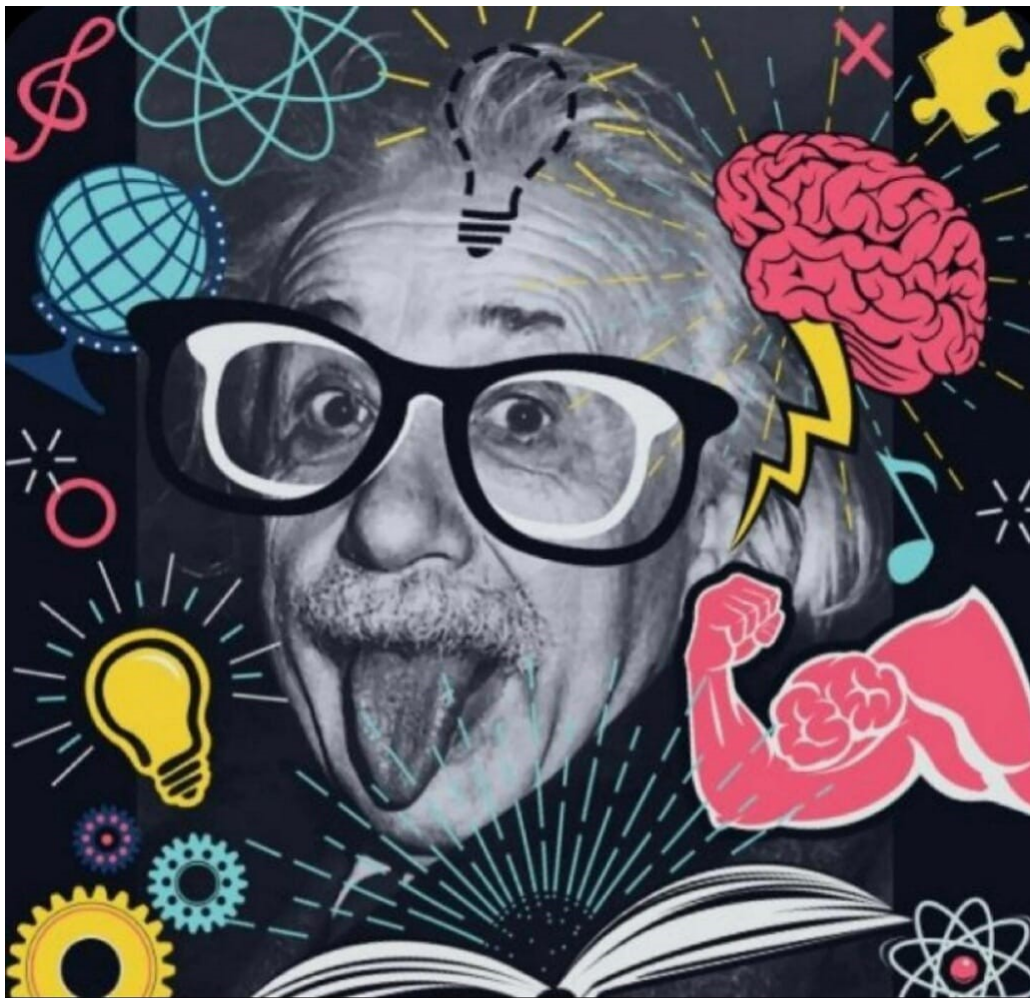
Bridge Pie	\$1.50	GF option \$1.80
Mince Pie	\$4.00	
Sausage Roll (GF)	\$1.80	
Sandwich	\$5.50 (Ham & Egg, Egg or B.L.T)	
Chicken Wrap	\$6.50	
Bread Roll - full size only	\$5.50 (Ham or Chicken)	
Hot Chips & 1 Breast Strip	\$4.00	
Hot Chips & 2 Breast Strips	\$6.00	
Hot Chips	\$2.00	
Yoghurt	\$2.00	
Large Muffin	\$3.80	
Cookie	\$2.00	GF option \$2.50
Brownie (GF)	\$2.00	
Popcorn (GF)	\$2.00	
Lolly Cake	\$3.00 (bought from school)	
Milk Drink/Juice	\$1.50 (bought from school)	

Term 2 Calendar

HOME & SCHOOL DISNEY DISCO	<i>Fri 31st May</i>
KINGS BIRTHDAY	<i>Mon 03rd Jun</i>
CONFERENCES (School closed from 2pm)	<i>Thurs 06th Jun</i>
CONFERENCES (School closed all day)	<i>Fri 07th Jun</i>
MUSIC WORKSHOP AT URENUI SCHOOL*	<i>Mon 17th Jun</i>
TEACHER ONLY DAY	<i>Mon 24th Jun</i>
LITERACY AFTERNOON	<i>Tues 25th Jun</i>
CLUSTER MATARIKI EVENT*	<i>Thurs 27th Jun</i>
MATARIKI - SCHOOL CLOSED	<i>Fri 28th Jun</i>
LAST DAY OF THE TERM	<i>Fri 05th July</i>

* Trips that require parent transport

Please contact Tiaki or Connie for further information.



MEME SCHOOL

QUIZ NIGHT

Save the date

5th July 2024

details to follow